

◀ PULL THIS STRIP TO EXPOSE ADHESIVE



2026 SILVERADO 2500 CREW CAB LT 4WD

**EXTERIOR: LAKESHORE BLUE
METALLIC
INTERIOR: JET BLACK**

**ENGINE: 6.6L V8 GASOLINE
TRANS: ALLISON 10-SPEED AUTO**

Visit us at www.chevy.com

STANDARD EQUIPMENT

ITEMS FEATURED BELOW ARE INCLUDED AT NO EXTRA CHARGE IN THE STANDARD VEHICLE PRICE SHOWN

OWNER BENEFITS

- 3 YEAR / 36,000 MILE* BUMPER-TO-BUMPER LIMITED WARRANTY
- 5 YEAR / 60,000 MILE* POWERTRAIN LIMITED WARRANTY, ROADSIDE ASSISTANCE & COURTESY TRANSPORTATION
- FIRST MAINTENANCE VISIT *WHICHEVER COMES FIRST SEE CHEVROLET.COM OR DEALER FOR TERMS, DETAILS & LIMITS

SAFETY & SECURITY

- AUTOMATIC EMERGENCY BRAKING
- FORWARD COLLISION ALERT
- FRONT PEDESTRIAN BRAKING
- LANE DEPARTURE WARNING
- FOLLOWING DISTANCE INDICATOR
- INTELLIBEAM
- BUCKLE TO DRIVE

TEEN DRIVER MODE

PERFORMANCE & MECHANICAL

- AUTO-LOCKING REAR DIFF
- ELECTRONIC TRANSFER CASE
- TRAILERING PACKAGE WITH HITCH GUIDANCE
- TRAILER BRAKE CONTROLLER

CONNECTIVITY & TECHNOLOGY

- CHEVY INFOTAINMENT 3 PREMIUM 13.4" DIAG HD COLOR TOUCHSCREEN W/GOOGLE BUILT-IN COMPATIBILITY INCLUDING NAV CAPABILITY, BLUETOOTH FOR MOST PHONES WIRELESS APPLE CARPLAY & WIRELESS ANDROID AUTO FOR COMPATIBLE PHONES
- 8 YEARS ONSTAR BASICS SEE ONSTAR.COM FOR TERMS
- SIRIUSXM AUDIO WITH SXM TRIAL SUBSCRIPTION
- DRIVER INFORMATION CENTER 12.3" DIAG DISPLAY
- KEYLESS OPEN AND START

PUSH BUTTON START

INTERIOR

- STEERING WHEEL AUDIO CONTROLS
- CARPETED FLOOR
- POWER DOOR LOCKS
- POWER WINDOWS

EXTERIOR

- CORNERSTEP REAR BUMPER
- EZ LIFT, POWER LOCK, & RELEASE TAILGATE

MANUFACTURER'S SUGGESTED RETAIL PRICE

STANDARD VEHICLE PRICE \$56,400.00

OPTIONS & PRICING

OPTIONS INSTALLED BY THE MANUFACTURER (MAY REPLACE STANDARD EQUIPMENT SHOWN)

- TRAIL BOSS PACKAGE 4,030.00
- BLACK GRILLE BAR
- CHEVROLET BLACK BOW TIE
- 20" WHEELS HIGH GLOSS BLACK
- FRONT AND REAR BUMPER

RED RECOVERY HOOKS

- TIRES BF GOODRICH OFF-ROAD
- HIGH GLOSS BLACK MIRROR CAPS
- SPRAY ON BEDLINER
- HEADLAMPS LED
- TRAILERING MIRRORS - HEATED
- BLACK SKID PLATE
- BLACK BADGING
- HIGH GLOSS BLACK DOOR HANDLES
- SAFETY PACKAGE 1,335.00
- FRONT AND REAR PARK ASSIST
- TRAILER SIDE BLIND ZONE ALERT
- REAR CROSS TRAFFIC ALERT
- HD SURROUND VISION
- BED VIEW CAMERA
- TRAILERING APP
- TRAILER CAMERA PROVISIONS
- OFF-ROAD ASSIST STEPS (DEALER INSTALLED) 1,095.00
- LEATHER PACKAGE 985.00
- LEATHER APPOINTED FRONT OUTBOARD SEATS
- REAR 60/40 FOLDING BENCH SEAT WITH SEATBACK AND

UNDERSEAT STORAGE

- CONVENIENCE PACKAGE 985.00
- DUAL-ZONE CLIMATE CONTROL
- 10-WAY POWER DRIVER SEAT
- MANUAL TILT AND TELESCOPING STEERING COLUMN
- CARGO AREA LIGHTING
- LED FOG LAMPS
- FRONT BUCKET SEATS WITH CENTER CONSOLE 655.00
- REMOTE START PACKAGE 525.00
- REMOTE START
- THEFT-DETERRENT SYSTEM
- REAR-WINDOW DEFOGGER
- MULTI-FLEX TAILGATE 445.00
- CONVENIENCE PACKAGE II 425.00
- HITCH GUIDANCE W/ HITCH VIEW
- REAR SLIDING POWER WINDOW
- UNIVERSAL HOME REMOTE
- HEAT PACKAGE 400.00
- HEATED DRIVER AND FRONT PASSENGER SEATS
- HEATED STEERING WHEEL
- SNOW PLOW PREP/CAMPER PACKAGE: 300.00

220 AMP ALTERNATOR

- INCREASED FRONT GAWR
- SKID PLATES
- ROOF EMERGENCY LIGHT PROVISIONS W/ PASS THROUGH ALL-WEATHER FLOOR LINERS (DEALER INSTALLED) 295.00
- Z71 OFF-ROAD PACKAGE 175.00
- OFF-ROAD SUSPENSION INCLUDING TWIN TUBE SHOCKS
- HILL DESCENT CONTROL 140.00
- REAR WHEELHOUSE LINERS 140.00
- GVWR: 11,025 LBS (5,001 KG) INC.
- REAR AXLE: 3.73 RATIO INC.

TOTAL OPTIONS	\$11,790.00
TOTAL VEHICLE & OPTIONS	\$68,190.00
DESTINATION CHARGE	2,795.00

TOTAL VEHICLE PRICE* \$70,985.00

California Air Resources Board Gasoline Vehicle

Environmental Performance

These ratings are not directly comparable to the U.S. EPA/DOT light-duty vehicle label ratings. For information on how to compare, please see www.arb.ca.gov/ep_label.

Protect the environment. Choose vehicles with **higher ratings**:

Greenhouse Gas Rating (tailpipe only)



Smog Rating (tailpipe only)

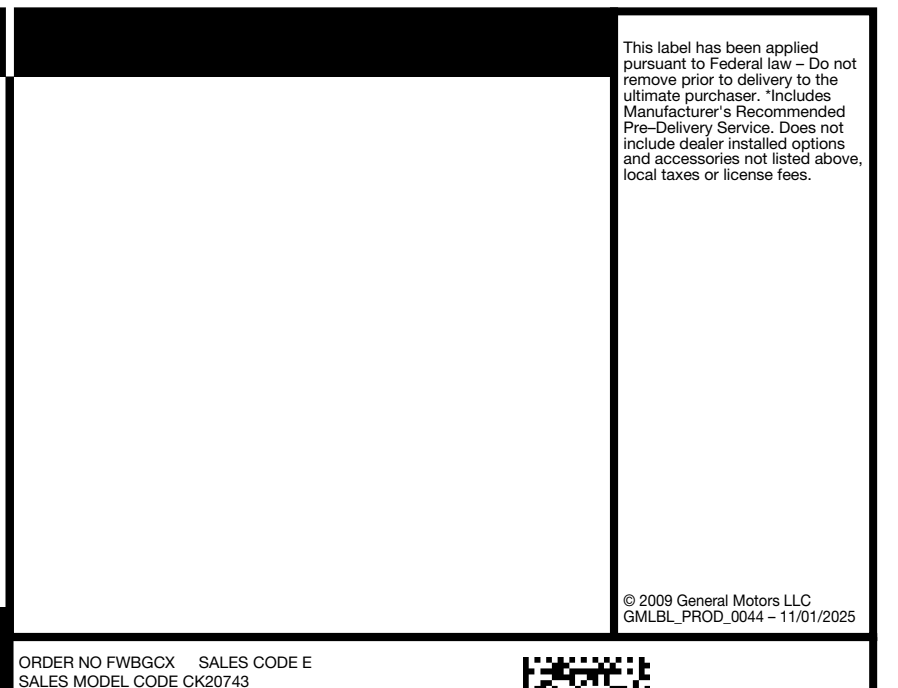


Vehicle emissions are a primary contributor to climate change and smog. Ratings are determined by the California Air Resources Board based on this vehicle's measured emissions.



This label has been applied pursuant to Federal law - Do not remove prior to delivery to the ultimate purchaser. *Includes Manufacturer's Recommended Pre-Delivery Service. Does not include dealer installed options and accessories not listed above, local taxes or license fees.

© 2009 General Motors LLC
GMLBL_PROD_0044 - 11/01/2025



Better drives start with OnStar®
Activate today

Learn more at onstar.com, or scan the QR code

onstar.com/privacy

ORDER NO FWBGCX SALES CODE E
SALES MODEL CODE CK20743
DEALER NO 15018
FINAL ASSEMBLY:
OSHAWA, ON CANADA

VIN 2GC4KNE75T1204798 REISSUE

DEALER TO WHOM DELIVERED
BARLOW CHEVROLET
PO BOX 7003
DELTRAN, NJ 08075-7003

